

Light and shadow are real building blocks of our mental construction of the external world.

Black or dark and white or light are often a better way to reveal texture, shadow and contrast. Working with a limited range of colour provides a powerful challenge to the traditional preferences for colour.



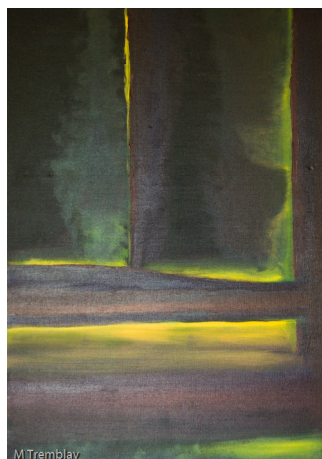
Move prop, Atelier Coppinger

The black and white picture is from a studio of a friend who makes models for movies. The shadows define the shapes and provide a focused perspective on the object itself.

Perhaps a more common image is that of the grasses with their shadows. Pay attention to the horizontal shadow playing across the grasses, which contrasts with their vertical lines. It is the interplay

of these two planes that creates the possibility for an abstract interpretation.

Grasses and Dunes, Camber Sands, UK



When I looked out, Tremblay

The painting explores light, but what do you actually think you are seeing? What mood is suggested?

Try this...

Explore the light and dark structures in this photograph of a tree.

Find something quite ordinary around your home or garden, but look only at the light and dark bits.



Wood